

Inside Voices

IN THIS EDITION:

Expanding C.N.A.	1
Shopping On-Line	2
News & Notes	3
Upcoming Events	4

Goodwill Dates

September 29 (Mon)
Project MOVE Graduation

September 30 (Tues)
Rosh Hashanah

October 9 (Thur)
Yom Kippur

October 13 (Mon)
Columbus Day— Federal Holiday,
Banks, Post Offices closed

October 20 (Mon)
Customer Service Training 1st Day
Classroom Training (M.O.V.E)

Monday, Oct. 27 @ 8:00AM
General Assembly

Did you submit the name selected for our new Document Destruction Services? Well, come to the Oct. 27 General Assembly and find out!

Next Issue, Oct. 10

New Grant To Expand Certified Nursing Assistant Training Program



Goodwill, Serving the People of Southern Los Angeles County (Goodwill SOLAC) recently received a \$165,000 grant for its Allied Healthcare Certified Nursing Assistant Training Program (C.N.A.). Awarded by the Los Angeles Workforce Funder Collaborative (LAWFC), a public-private partnership led by United Way of Greater Los Angeles, consists of 8 different organizations including The California Endowment which is funding the C.N.A. training program.

“We are delighted to have been named as a grantee of the Los Angeles Workforce Funder Collaborative,” said Janet McCarthy-Wilson, President & CEO, “This award will allow us to build capacity and expand our program with the inclusion of Home Health Aid (HHA) Certification.” The funds provide a step forward in GoodwillSOLAC’s ongoing efforts to provide quality programs that produce pathways out of poverty for underrepresented young adults in southern Los Angeles County.



The award was part of a larger distribution announced by LAWFC of \$1.3 million to Los Angeles County organizations providing job training and workforce development within the healthcare, construction, logistics (including the Los Angeles Ports), and systems change sectors. The grants will serve to drive the LAWFC’s goal of creating the necessary pathways to ensure a skilled and financially stable workforce.

Designated Job Training recipients in Healthcare and Allied Health include: Goodwill SOLAC; Jewish Vocational Services; Southeast Los Angeles County Workforce Investment Board; and Worker Education and Resource Center.



Recipients in the Construction and Building Trades category were: Pacific Asian Consortium for Employment; Playa Vista Job Opportunity and Business Services; Venice Community Housing; and in the Logistics/Goods Movement group; Teamsters Joint Council 42 Training Academy. In Workforce Development Systems Change grantees were: Los Angeles Area Chamber of Commerce; Strategic Concepts in Organizing and Policy Education; California Transportation & Logistics Institute; and South Bay Workforce Investment Board.

Following the Workforce Partnership Model, the LAWFC was launched in 2007 to develop a more skilled workforce, free employees from low-wage jobs that do not provide for families, and increase the capacity of the existing workforce development system. The collaborative includes United Way of Greater Los Angeles, also funding the C.N.A. program, Bank of America, the California Community Foundation, Kaiser Permanente, National Fund for Workforce Solutions, S. Mark Taper Foundation, State of California, Employment Development, and The California Endowment.

Job Openings

Goodwill encourages qualified employees to seek promotional opportunities or career changes at Goodwill. Eligible employees may apply for promotion and or transfer to all openings and will be given the same consideration as applicants from outside Goodwill.

To be eligible an employee must have been employed by Goodwill for a minimum of 90 days and have had no disciplinary activity of any kind within the preceding 6 months.

Applications for promotion and or transfer can be obtained from the H.R. Department and must be submitted to the employee's immediate supervisor and sent to the Division Director for approval.

Current Openings

- Assistant Store Manager
- Sales Associate/
- Material Handler
- Store Manager

Employee Referral Program

Employees are encouraged to recommend individuals for employment. Goodwill's "Employee through Employee" Referral program equals \$50 for staff. To learn more contact your HR Dept.

What's Clicking On-Line @Shopgoodwill.com?

Intricately Designed Oriental Vase w/Gold Trim \$70.99;
 Hand Signed & Numbered Serigraph = \$302.99;
 Hand-Carved Ivory-Like Buddha Signed \$91.00;
 Old Bakelite Lowe Mah Jong Set 152 Tiles & 5 Rack \$176.00; and
 750 Italian Gold Neck w/Silver Best Mom Pendant \$149.74.
 The beautiful Silver Bracelet w/ Jade Like Stone sold for \$102.00 and a Beautiful Silver Bracelet w/ Jade Like Stone \$102.00.

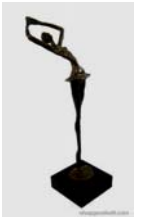


Acoustic Guitar w/Case & Owner's Manual \$428.00, and to the far right this Lanky Bronze Ballerina Sculpture \$129.00.

These little earrings "Silver South West Turquoise Ears w/Coral Accents" went for \$114.00. Special Thanks to our newly assembled Production Team in helping to keep our shelves filled and to the stores and transportation that helped with all our other items.



A hearty thank you from your Shopgoodwill Team.



Teri Leyva, Production Assistant

News and notes

A long time volunteer and dedicated member of our Board of Trustees passed away recently. **Ron Casriel** served on the Board since 2004 and held dual roles the last two years as Vice President and Treasurer. His expertise as an accountant and extensive financial background are only some of his strengths. He also brought to Goodwill a keen insight, and a broad vision for the future of Goodwill. We will miss his wonderful sense of humor and down to Earth nature. His spirit will remain and always be with us.



Ron Casriel

In the interim Larry De Jarnett, Chairman of the Board, has appointed as Vice President, **Brad Ward**, who has been on the board for many years and is President of Ward's Furniture.

Ed Pearson, the newest member of our Board, has been named as Treasurer. Ed, who recently retired, served as President, CEO and CFO of Kelly Paper Company.



Brad Ward



Ed Pearson



Michael Pauls

Replacing Brad Ward as Chairman of the Commercial Operations Sub Committee is **Michael Pauls**. Michael owns his own consulting firm, specializing in land use and land development related issues.

Some good news. To those employees who have asked if we selected a name for our **Document Destruction** business, the answer is *YES*. We are in the submission process to trademark our new business name and when that is complete we will be able to announce the new name. *When? You ask.* At our next General Assembly on Monday, October 27 @ 8 AM. So, please join us for the unveiling!

Changes Happening at Goodwill



Due to the high demand and growing waiting list to attend the programs offered by Goodwill, Ms. Jackie Petty-Wright, Project Move and Computer Trainer Extraordinaire will also be focusing her time, energy and talents on community based training for program participants from our community.

Effective October 22-23, 2008, which is the closing of the current computer training class, we will no longer be providing computer training to Goodwill employees. Although Goodwill will no longer be offering classes in basic computer skills, please do not let that discourage you from seeking out classes from other resources in your community such as community colleges and online courses.

If you have any questions and/or comments please direct them to your manager or make an appointment with **Karen Tovatt**, Director Human Resources.

LINKS

 Sign Language & Interpreting Services
www.linksinterpreting.com


IT'S NOT ALL ABOUT ME ?

Becoming a Client-centered Interpreter

Presented by: Gloria Williams & Mary D'Ettorre

The presenters have more than 35 years of combined interpreting experience and employ a total of almost 45 working interpreters. They have in-depth knowledge of the changing interpreting field as well as extensive background in managing the challenges faced by new and seasoned interpreters.

DATE: November 1, 2008

Time: Check-in 830AM

Workshop 9AM - 130PM

Location:

Goodwill, Serving The People Of Southern Los Angeles County

800 West Pacific Coast Highway, Long Beach 90806

Parking Free

Limit of 50 spaces

Continuing Education Units: (CEU's) = .35 CEU's

For more information, contact Chuck Scarpaci at cscarpaci@linksinterpreting.com

The SCRID is approved by the RID CMP to sponsor Continuing Education Activities. The program is in content area of professional studies and is all levels of working interpreters. No partial CEUs will be awarded. No partial payments accepted. Neither CEUs nor a Certificate of Attendance will be given to participants who arrive more than 30 minutes after the start of the workshop.

LINKS

Sign Language & Interpreting Services



Attendees to Pay \$35.00 in advanced before 10/17/08* and \$45.00 after 10/17/08/ and including at the door. Credit Card and or money orders only. Call 562-331-0927, to verify open at-the-door spot availability!

*Money orders and or credit card must be in house or processed by the due date.

Payment refunded only in the event of cancellation by the presenter or Links.

Mail to:

WORKSHOP 11108, Links Sign Language & Interpreting Services,

800 W. Pacific Coast Hwy, Long Beach, CA 90806

 Credit Card: www.linksinterpreting.com: Interpreters Corner/Workshops

Workshop presented in English. **Do you require an Accommodation? Only a Sign Language Interpreter will be provided upon request. Must notify before 10/17/08**



The Employee Assistance Program (EAP) is here for you. You



or your family members can use EAP for Grief and

Loss, Emotional challenges, Stress management, Marriage and Family conflict services.

It's easy to reach them and it's **Confidential**. Their toll free number is **800-977-7287**. You can also send them an email at :

askaffinity@acieap.com.

Access to a computer? Surf the Net at <http://www.affinity-online.com>. Our user name is: **good** and the password is: **aci**

Editorial Staff

Editor

Richard Guiss

Assistant Editors

Anita Austin

Contributing Writers

Anita Austin

Teri Leyva

"Inside Voices" is a publication produced by the Public Relations & Development Office of Goodwill Serving the People of Southern Los Angeles County. For article submissions or story ideas, please email rguiss@goodwillsolac.org.

Goodwill News & Notes

SAVE THE DATE!



Shopping Helps Spread Goodwill

If you were unable to register your new RALPHS rewards card by the beginning of this month, no worries. You can still register your card, it's just that RALPHS donation to GoodwillSOLAC will not be applied until the next term (Jan. '09). Those who registered, donations will be applied in the new term which began this month. If you have yet to register, just follow in the instructions below, and **Thank You!**



1. The Ralphs Club Card has been upgraded to the new Ralphs *rewards* Card, so you must have a Ralphs *rewards* card to enroll.
2. All stores have applications available at all times for a new Ralphs *rewards* card.
3. After you complete the Ralphs *rewards* application at the store, you can register at www.ralphs.com then click on Community Contribution.
4. All participants are required to register for the new term at www.ralphs.com.

Our Non-Profit number (NPO) is 83567.

Ralphs *rewards* cards can only be used at Ralphs stores. **Food 4 Less** Rewards Cards can only be used at Food 4 Less stores. Foods Co Rewards Cards can only be used at Foods Co. stores. For more information, contact Richard Guiss at rguiss@goodwillsolac.org.